

TENOR

SEVEN DAY FOOL

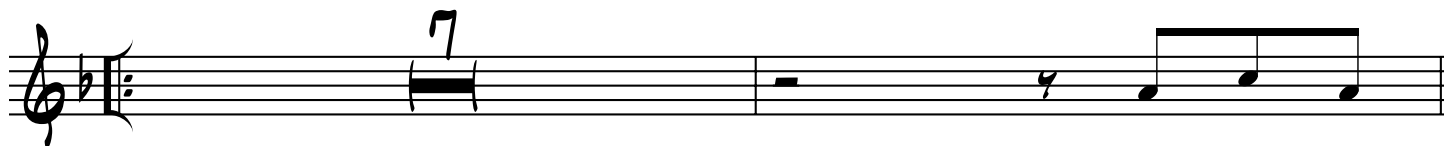
ARR: MILES JACKSON

WWW.MA-ME-O.COM

♩ = 150



[A]



5

[B]



13



17

[C]

[D]

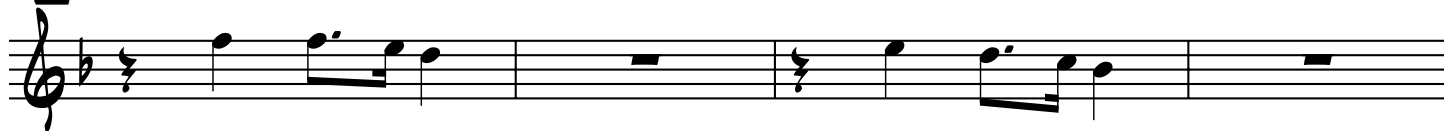


21

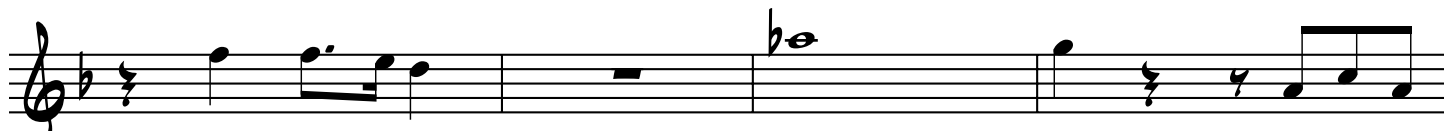


25

[E]



29



33

SEVEN DAY FOOL P. 2 - TENOR

37

D.S. AL CODA

41



47

The first staff of music is in treble clef with a key signature of one flat (B-flat). It contains six measures. The notes and rests are as follows: Measure 1: B-flat4 (quarter note), A4 (quarter note), G4 (quarter note). Measure 2: F4 (quarter note), E4 (quarter note), D4 (quarter note). Measure 3: C4 (half note), D4 (quarter note), E4 (quarter note). Measure 4: F4 (quarter note), G4 (quarter note), A4 (quarter note). Measure 5: B-flat4 (quarter note), A4 (quarter note), G4 (quarter note). Measure 6: F4 (quarter note), E4 (quarter note), D4 (quarter note).

51

FINE

55